

Lined Pipes

[Inquire Now](#) →

[Download](#)



Material Specifications

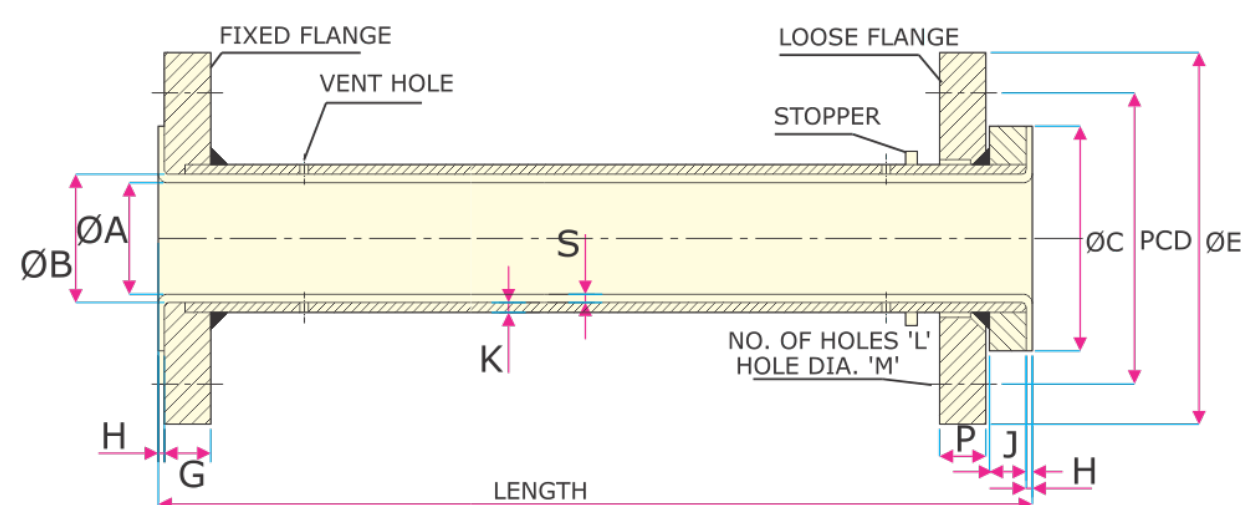
- Pipe : Seamless Carbon Steel Pipe
As per ASTM A 106 GR.B, SCH 40 (up to 6")
As per ASTM A 106 GR.B, SCH 20 (above 6")
- Flange : ASTM A-105 / IS 2062 GR.A
- Lining : PTFE Confirming ASTM D4895
PP Confirming ASTM D4101
PVDF Confirming ASTM D3222
HDPE conforming ASTM D3350

Dimension Specifications

- All dimensions are in mm
- Pipe as per ANSI B36.10
- Flange as per ANSI B16.5, 150#
- Tolerance on length of piping will be ± 3.2 mm
- Lining and other dimensional tolerance as per ASTM F1545
- Lining face thickness 80% of min. liner wall thickness

Testing

- 100% Visual Check
- 100% Dimensional Check
- 100% Spark Test at 15 KVDC
- 100% Hydro Test at 29 Kg/cm² holding for 3 min, as per ASTM F1545



DIMENSION TABLE									
Size		Diameter	Raised Face	P.C.D	Flange Thick.	No. of Holes	Hole Dia	Lining Thickness	Length ± 5 mm
NB	Inch	D	R/F	K	T	N	\emptyset	± 0.5 mm	Maximum L
25	1"	108	51	79.4	14.5	4	15.9	3	3000
40	1½"	127	73	98.4	17.5	4	15.9	3.5	3000
50	2"	152.4	92	120.7	19.5	4	19	3.5	3000
80	3"	190.5	127	152.4	24	4	19	4	3000
100	4"	228.6	157	190.5	24	8	19	5	3000
150	6"	279.5	216	241.3	25.5	8	22.2	6	3000
200	8"	342.9	270	298.5	29	8	22.2	7	3000
250	10"	406.4	324	362	30.5	12	25.4	7	3000
300	12"	482.6	381	431.8	32	12	25.4	7	3000
350	14"	533.4	413	476.2	35	12	28.6	7	3000