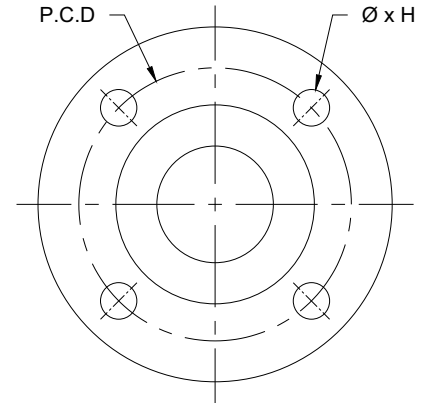


Elevation



Plan

Specification

Pipe: Seamless Sch. 40 ASTM A 106 Gr.B,
 ASTM A312 TP304 / TP316
 Flange: IS2062 / ASTM A105, ASTM A351 gr. CF8
 Lining: PTFE / HDPE / PP / PVDF

Testing

- 1) 100% Visual Check/ Dimensional Check
- 2) 100% Hydro Test at 29.8 Kg/cm²(g) holding time 3 min,
 as per ASTM F1545 -15A
- 3) 100% Spark Test at 15KV after Lining
- 4) 100% Lining Thk. to be Checked (>80% of Flaring Thk.)



DIMENSION TABLE									
Size		Diameter	Raised Face	P.C.D	Flange Thick.	No. of Holes	Hole Dia	Lining Thickness	Length ± 5mm
NB	Inch	D	R/F	K	T	N	Ø	± 0.5mm	Maximum L
25	1"	108	51	79.4	14.5	4	15.9	3	3000
40	1½"	127	73	98.4	17.5	4	15.9	3.5	3000
50	2"	152.4	92	120.7	19.5	4	19	3.5	3000
80	3"	190.5	127	152.4	24	4	19	4	3000
100	4"	228.6	157	190.5	24	8	19	5	3000
150	6"	279.5	216	241.3	25.5	8	22.2	6	3000
200	8"	342.9	270	298.5	29	8	22.2	7	3000
250	10"	406.4	324	362	30.5	12	25.4	7	3000
300	12"	482.6	381	431.8	32	12	25.4	7	3000
350	14"	533.4	413	476.2	35	12	28.6	7	3000