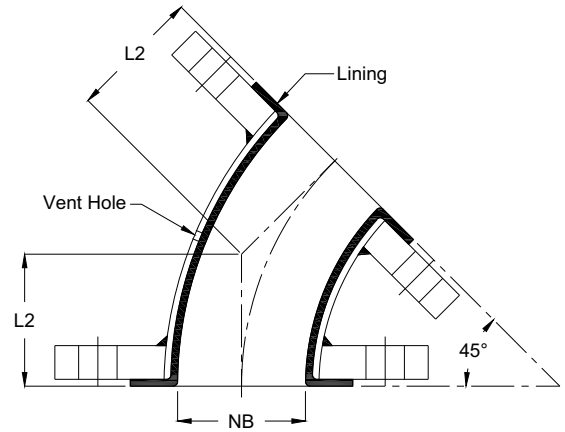


Lined Bend - 90°



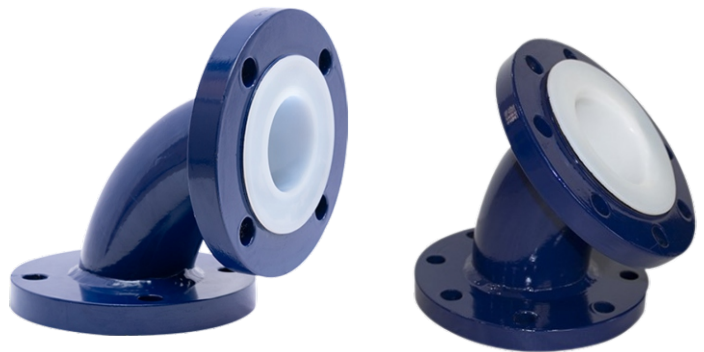
Lined Bend - 45°

Specification

Bend: ASTM A 234 Gr. WPB, Sch. 40, (Upto 8")
 ASTM A 234 Gr. WPB, Sch. 20, (above 8")
 Flange: ASTM A 105 - As per ASME B 16.5, 150#
 Lining: PTFE / FEP / PFA / HDPE / PP / PVDF

Testing

- 1) 100% Visual Check/ Dimensional Check
- 2) 100% Hydro Test at 29.8 Kg/cm²(g) holding time 3 min, as per ASTM F1545 -15A
- 3) 100% Spark Test at 15KV after Lining
- 4) 100% Lining Thk. to be Checked (>80% of Flaring Thk.)



DIMENSION TABLE										
Size		Diameter	Raised Face	P.C.D	Flange Thick	No. of Holes	Hole Dia	Lining Thickness	Length	
NB	Inch	D	R/F	K	T	N	Ø	±0.5mm	L1	L2
25	1"	108	51	79.4	19.5	4	19	3	89	45
40	1½"	127	73	98.4	22.2	4	19	3.5	102	57
50	2"	152.4	92	120.7	24	4	19	3.5	114	64
80	3"	190.5	127	152.4	24	8	19	4	140	76
100	4"	228.6	157	190.5	25.5	8	22.2	5	165	102
150	6"	279.5	216	241.3	29	12	22.2	6	204	127
200	8"	342.9	270	298.5	30.5	12	25.4	7	228	140
250	10"	406.4	324	362	32	12	25.4	7	279	165
300	12"	482.6	381	431.8	34.9	12	28.6	7	305	190